

## BGA emulation adapter allows BGA socket to be inserted.

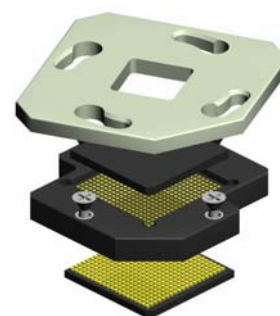
The SMT adapter with solder balls emulate the chip's BGA footprint and is easily installed using standard flux and reflow techniques.

The adapters have the same solder ball types as the IC's they are emulating.

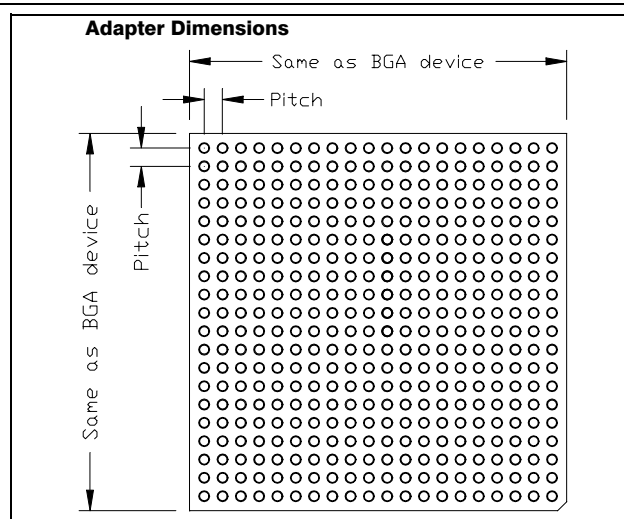
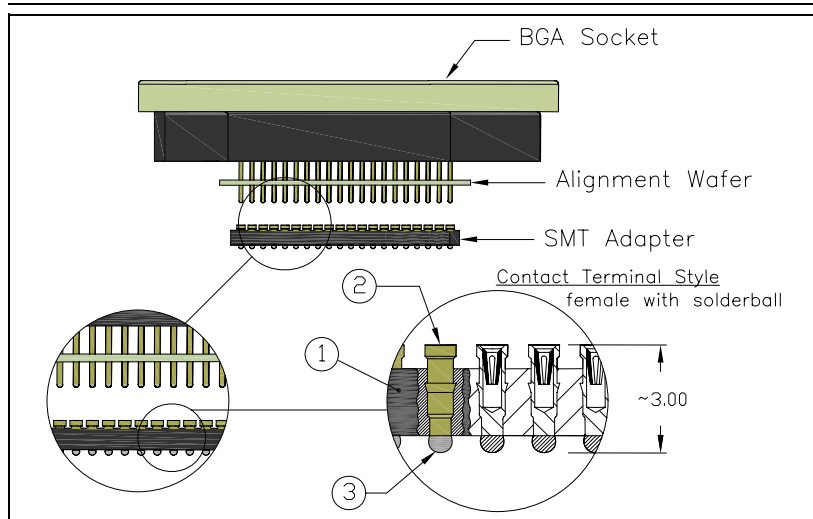
You can combine the SMT foot with the E-tec "Twist Lock Socket" or any other socket style shown in our IC-Socket & Interconnect Products Catalog #09 page 7 to 12 & 14.

The corresponding male BGA socket, through hole type, is plugged into the adapter.

We offer any pin-out, configuration and grid size for pitch 0.80mm, 1.00mm and 1.27mm.



**BGA Socket with SMT Adapter**



## Specifications

- 1 Insulator** (Adapter Wafer)
- 2 Contact** (Terminal & Contact Clip)  
(accepts 0.20mm – 0.30mm diameter pins)
- 3 Solder Ball**

- Material:** FR4/G10 or equivalent high temp material (RoHS compliant)
- Material:** Terminal CuZn (RoHS compliant)  
Contact Clip BeCu (RoHS compliant)
- Material:** Sn63Pb 37 (NON RoHS compliant)  
Sn96.5 Ag 3.0 Cu 0.5 (RoHS compliant)

Operating Temperature: -55°C to +125°C

Processing Temperature: 260°C for 60 sec.

## How to order

MGS xxxx – SB01 – xx X xx xx

<b>Nbr of contacts/balls</b>	<b>Contact Terminal styles</b>	<b>Grid size</b>	<b>Config Code</b>	<b>Contact Plating &amp; Solder Ball Alloy</b>	<b>Pitch of Grid Array</b>
as per device	<p><b>SB01</b> = standard (see drawing above)</p> <p>others on request</p> <p>For standard types please refer to IC-Sockets &amp; Interconnect Products" Catalog #09 page 16</p>	<b>will be given by the factory after receipt of the BGA chip datasheet.</b>		<p><b>tin leadfree type:</b> (RoHS compliant)</p> <p><b>95</b> = solderball tin / contact gold</p> <p><b>tin lead type:</b> (NON RoHS compliant)</p> <p><b>05</b> = solderball tin / contact gold</p>	<p><b>08</b> = 0.80mm</p> <p><b>10</b> = 1.00mm</p> <p><b>12</b> = 1.27mm</p> <p>For 1.27mm pitch see comments at the bottom of this page.</p> <p>others on request</p>

E-tec will supply the corresponding BGA sockets for plugging into these adapters, which will be delivered with gold plated thru-hole pins and a pin alignment wafer for easy insertion. Please choose the socket style you wish to plug into these adapters from the E-tec Catalog "IC-Socket & Interconnect Products" #09, the pages 7 to 12 and 14 and request from E-tec the contact style "70" (thru-hole pin), with the plating code to "55" (gold) and with the adder "A" for the alignment plate (XXXxxxx-xx70-xxXX55A). Example: BPW256-1070-16AA55A for a 256-pin twist lock socket (page 8). For 1.27mm pitch sockets a special thru-hole pin -1272- will be offered.

Alternatively the mini-grid adapters (ABG series - see page 15) can also be supplied together with these SMT BGA emulation adapters.

**Please contact E-tec for any further information.**